

Surface-mounted luminaire - Single micro louvre with 80° lens - direct distribution

Housing of sheet steel in a delicate square design; black, die-cast aluminium end faces Housing colour traffic white RAL 9016; Light distribution direct distribution by means of Single micro louvre with 80° lens, black. Suitable for VDU workstations, 65° < 100 cd/m² omnidirectional glare reduction in accordance with current DIN-EN 12464-1 standard, UGR (4H/8H) 18.4. Wired ready for connection via 5-pin connection terminal with plug-in contacts. Black housing and white single micro louvre possible on request.

CHARACTERISTICS

Order number	60602046670
EAN number	4020863419401
Commodity code	94051190
Certification mark	IP 20, Protection class I, VDU 65°<100, F, Indoor, CE
Impact resistance (IK rating)	IK02
Ambient temperatur	ta 25°C
Special properties	Ready for IoT
Warranty period	5 years
State funding programs	BEG - Federal funding for efficient buildings (valid only for Germany)

ELECTRICAL ENGINEERING

Controller	Electronic driver DALI2 (1 pcs.)
System output	22W
Mains voltage	230V/50Hz
Circuit breakers (inrush current)	18 pieces/B10, 28 pieces/B16, 30 pieces/C10, 46 pieces/C16
Energy efficiency class/light source	B

LIGHTING TECHNOLOGY

Placement	LED, Colour rendering/Light colour CRI ≥ 80 / 4000K
Colour tolerance (MacAdam)	3SDCM
Photobiological safety (Luminaire)	RG1
Nominal luminous flux	3106lm
LED service life	50000h L80/B10 (Tq 25°C)
Luminaire luminous efficiency	142lm/W
UGR lat./long.	18.4 / 18.3

MECHANICS

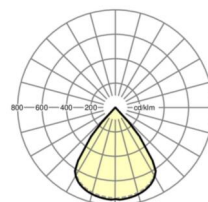
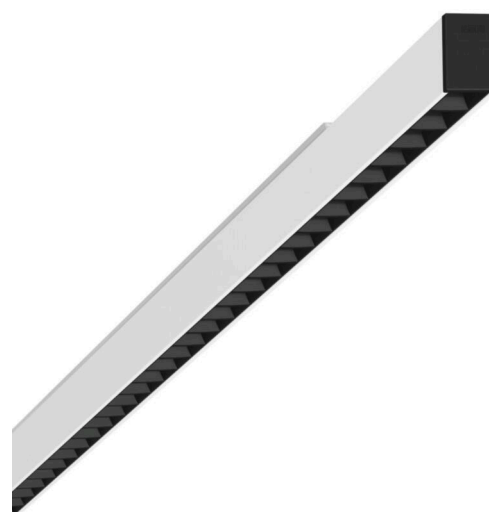
Housing colour	traffic white RAL 9016
Dimensions (LxWxDxH)	1131mm x 51mm x 81mm
Weight (net)	2.9kg
Cable entry KE (X/Y)	0mm/0mm
Type of installation	Ceiling-mounted single installation

Dimensions

L	1131 mm	Length
B	51 mm	Width
H	81 mm	Height
A1	900 mm	Mounting distance single mounting
X	0 mm	Distance cable infeed to the center of the luminaire on the X-axis
Y	0 mm	Distance cable infeed to the center of the luminaire on the Y-axis

DEEP-LINK

<https://www.regiolux.de/en/article/60602046670>



Reference	LED 3100lm 840
ηLB	100 %
Φ ↓/↑	100 % / 0 %
UGR lat./long.	18.4 / 18.3

